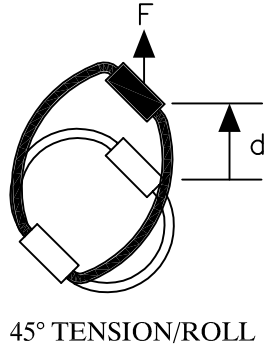
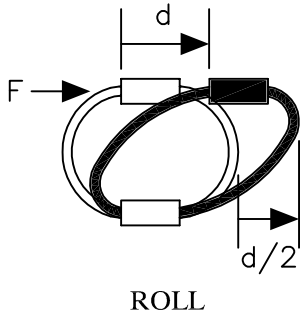
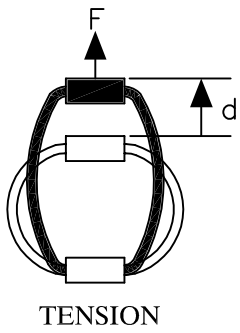
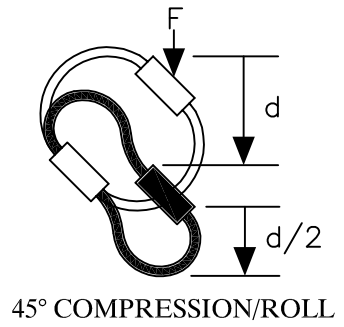
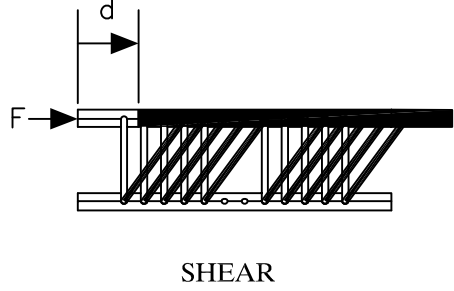
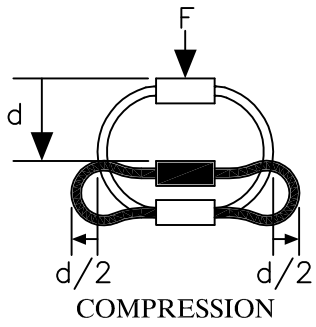
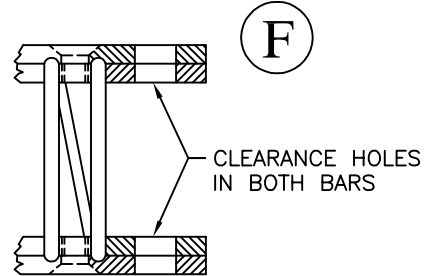
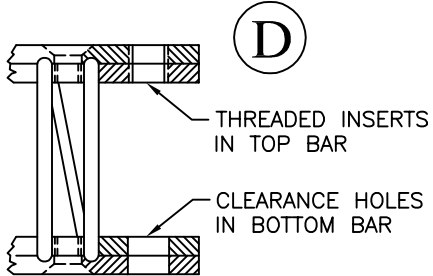
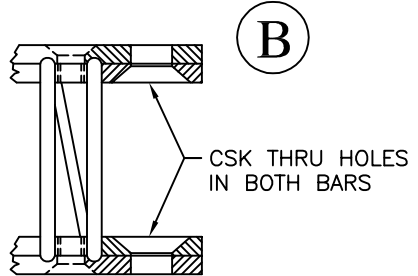
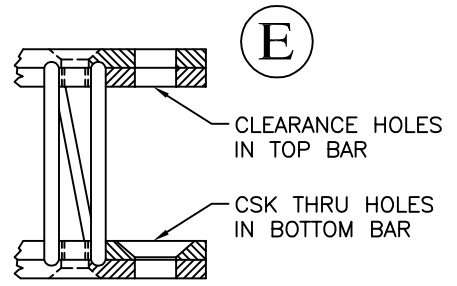
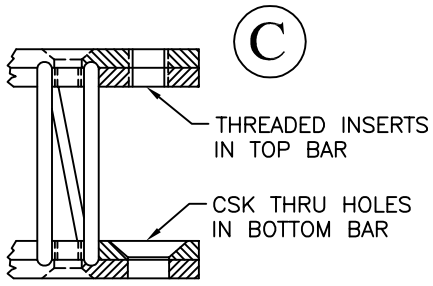
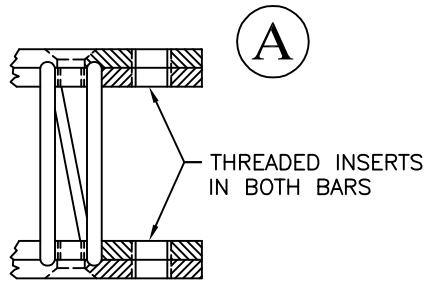


DEFINITION OF LOADING MODES

Load vs. deflection data for each of the different load modes can be found on the Isolator Data Sheets.

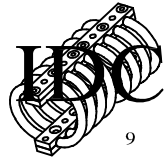


MOUNTING HOLE OPTIONS



See Isolator Data Sheets for detailed information regarding mounting holes.

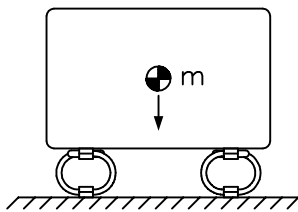
TOLL FREE : 888-ISOLATOR
 FAX : (631) 491-5672
 WEB SITE : www.isolator.com
 E-MAIL : sales@isolator.com
 CAGE : 07QQ7



MOUNTING CONFIGURATIONS

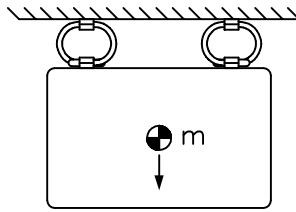
- Due to their multi-axis capability, cable isolators can be installed in a variety of different mounting configurations.
- IDC engineering will be happy to assist you in selecting the mounting arrangement that is the best for your particular application.
- Below are some of the more common installations.

1



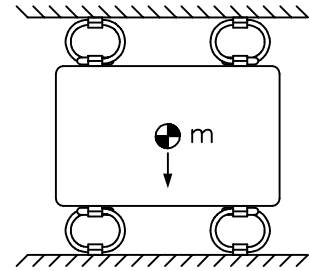
COMPRESSION @ BASE

2



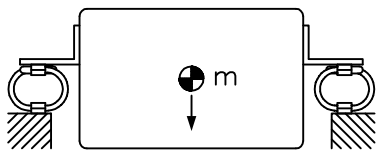
TENSION

3



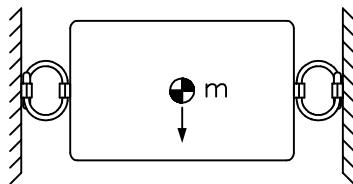
COMPRESSION & TENSION

4



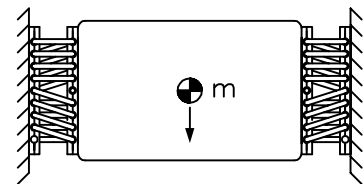
COMPRESSION @ CG

5



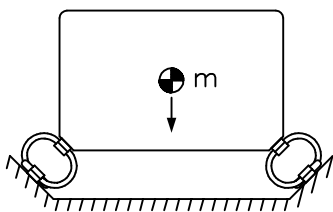
ROLL @ CG

6



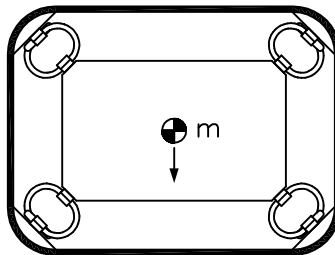
SHEAR @ CG

7



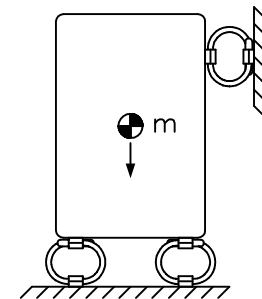
45° @ BASE

8



45° IN 4 CORNERS

9



BASE MOUNT WITH STABILIZERS

TOLL FREE : 888-ISOLATOR
 FAX : (631) 491-5672
 WEB SITE : www.isolator.com
 E-MAIL : sales@isolator.com
 CAGE : 07QQ7

