

RAIL ASSEMBLIES

Rail Assemblies are used primarily to facilitate installation and to add structural rigidity to equipment and/or mounting interfaces. Structural angles and channels can be used in lieu of flat rails to allow for mounting to perpendicular surfaces. Rail Assemblies are generally custom made, and therefore specifics about length, width, materials, finishes, etc... need to be specified at the time of order. The drawing(s) at the bottom of this page, and sub-sequent pages, can assist you in the design process.

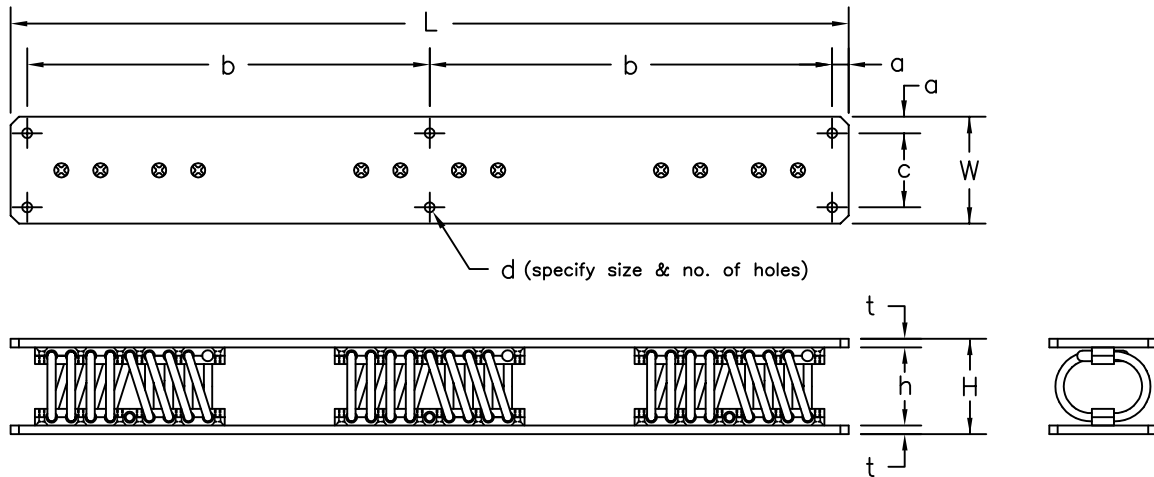
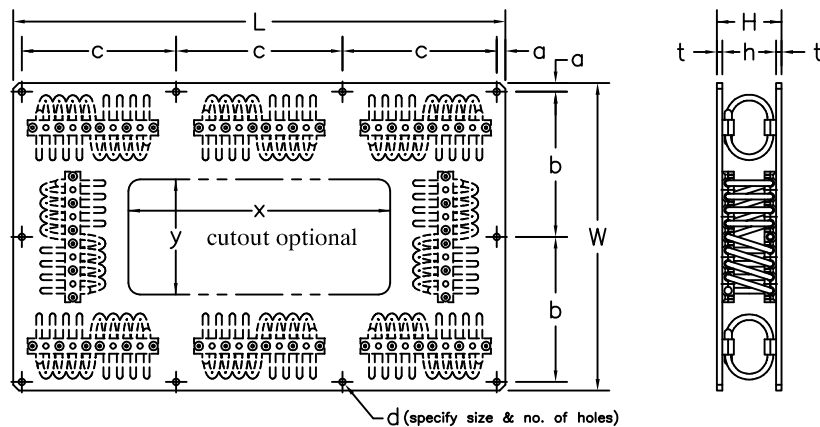


PLATE & TRAY ASSEMBLIES

Plate & Tray Assemblies provide the user the option of incorporating a large number of isolators into a relatively small area. This is accomplished without costly and time consuming installation since the mounting holes are located around the perimeter of the plates. Plate assemblies are especially useful when isolating many pieces of equipment having similar footprints, but varying weights. By simply adding or deleting isolators, a constant Spring Rate to Weight ratio (K/W) can be maintained for all pieces of equipment therefore insuring equal levels of performance. As with Rails, Plate assemblies provide the added benefit of increasing the structural rigidity of the equipment.



TOLL FREE : 888-ISOLATOR
 FAX : (631) 491-5672
 WEB SITE : www.isolator.com
 E-MAIL : sales@isolator.com
 CAGE : 07QQ7

